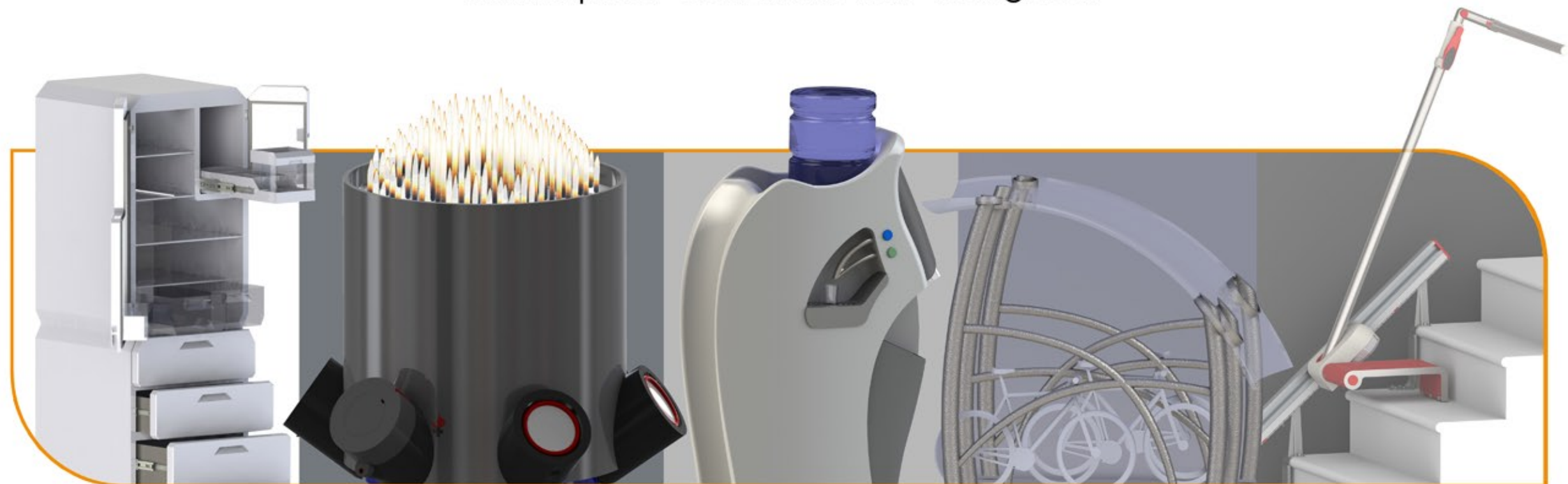




A Visual Portfolio
B.A. (hons) Product Design
University of Derby Graduate
A brief selection of projects
Christopher Goddard has designed



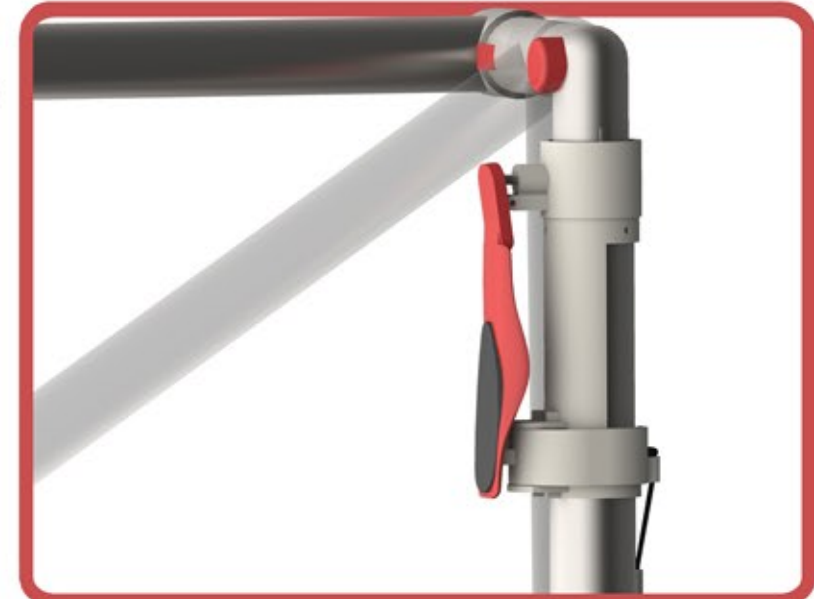
Email: c.m.goddard@hotmail.co.uk

Coroflot: <http://www.coroflot.com/ChrisGoddardDesign>

STEADY STEP

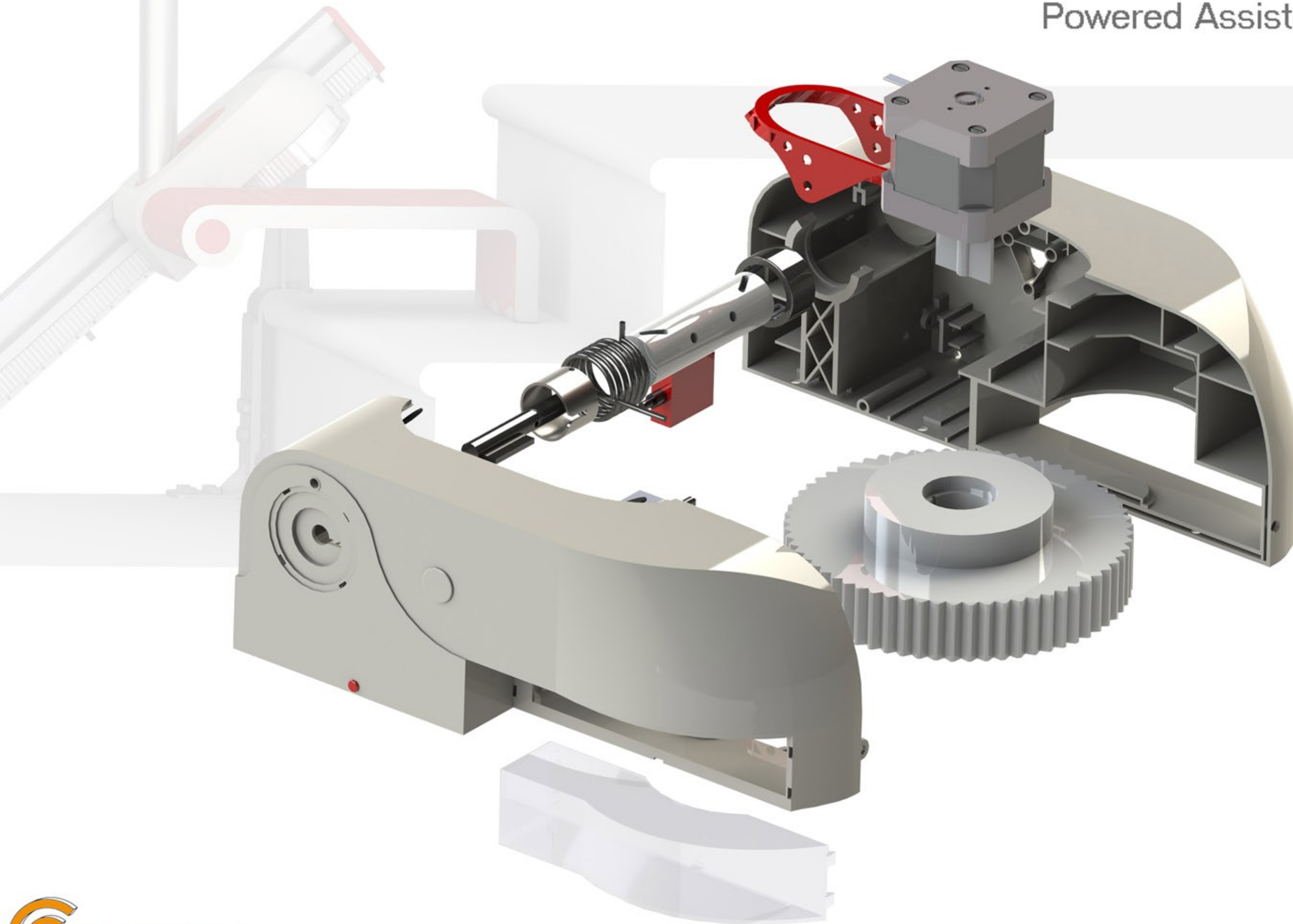
Powered Assistive Stair Climber

The 'Steady step' has been developed to reduce the amount of strain on the users leg muscles and joints, whilst also keeping them mobile. This is done using a step half the height of an average step, which one foot is placed on to climb up each step. This halves the height the leg has to be lifted to, effectively halving the effort put in by the user. The handle bar is used to steady the user, as well as allowing them to use their arms to relieve some stress from the legs.



STEADY STEP

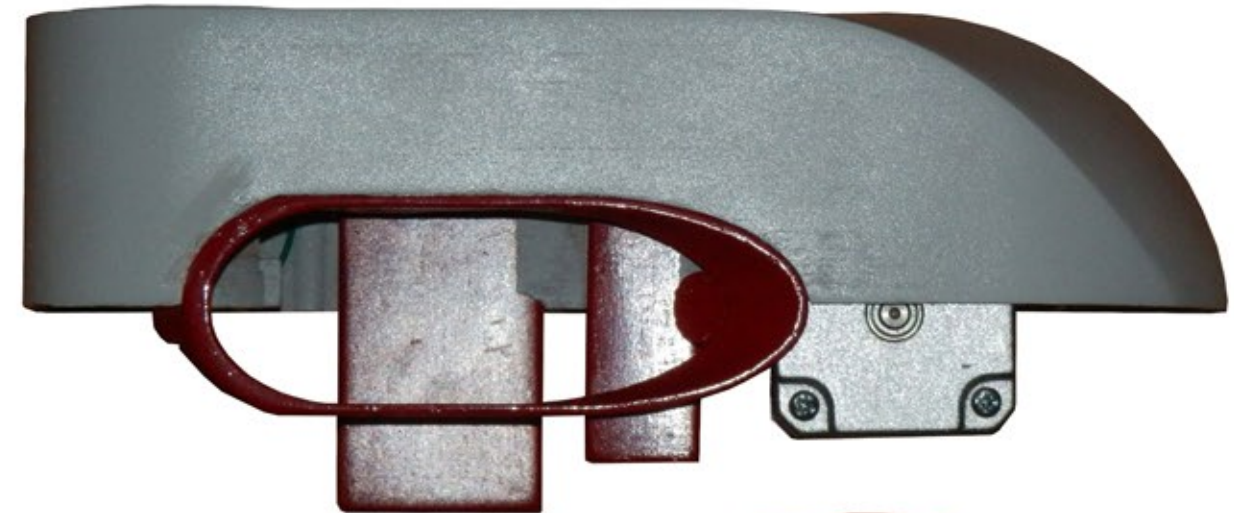
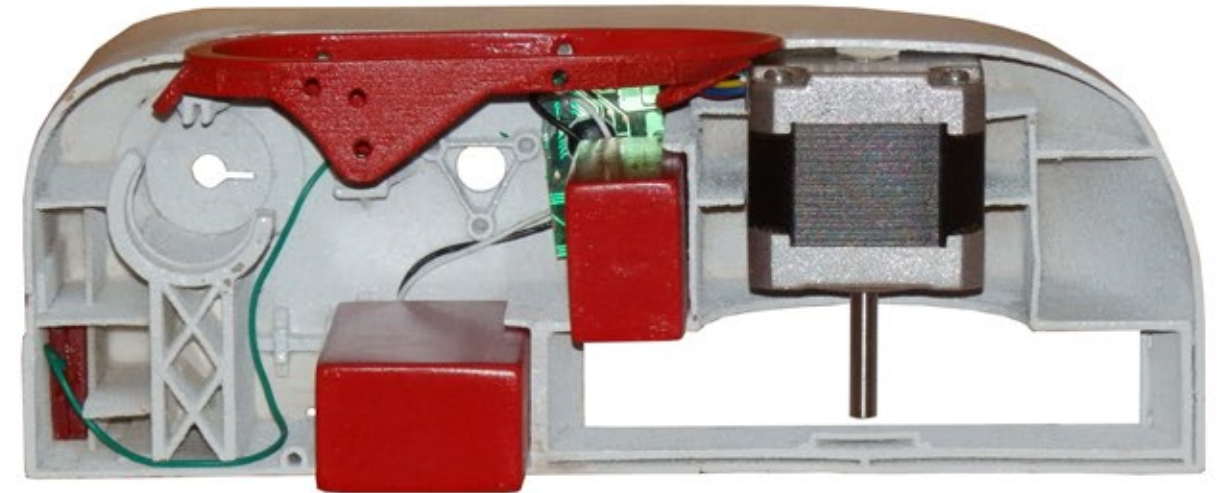
Powered Assistive Stair Climber





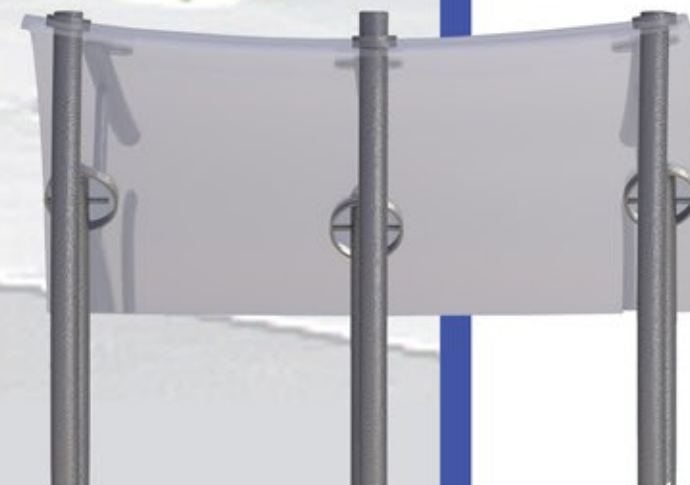
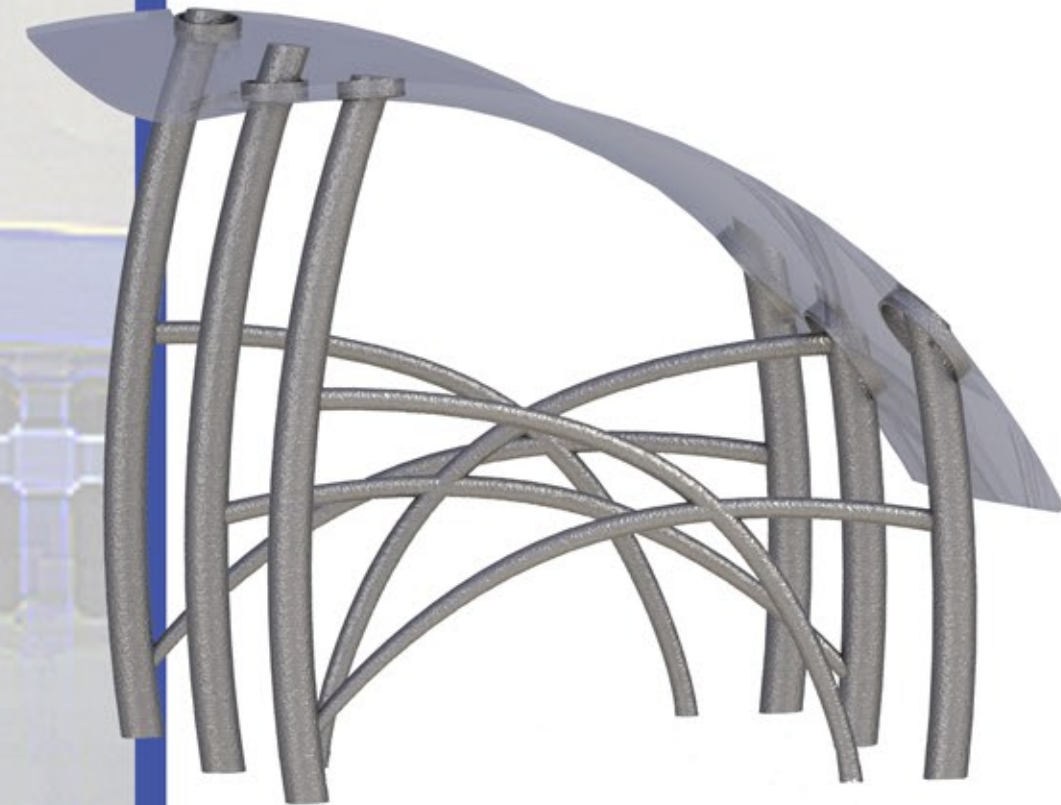
STEADY STEP

Powered Assistive Stair Climber



bike trap

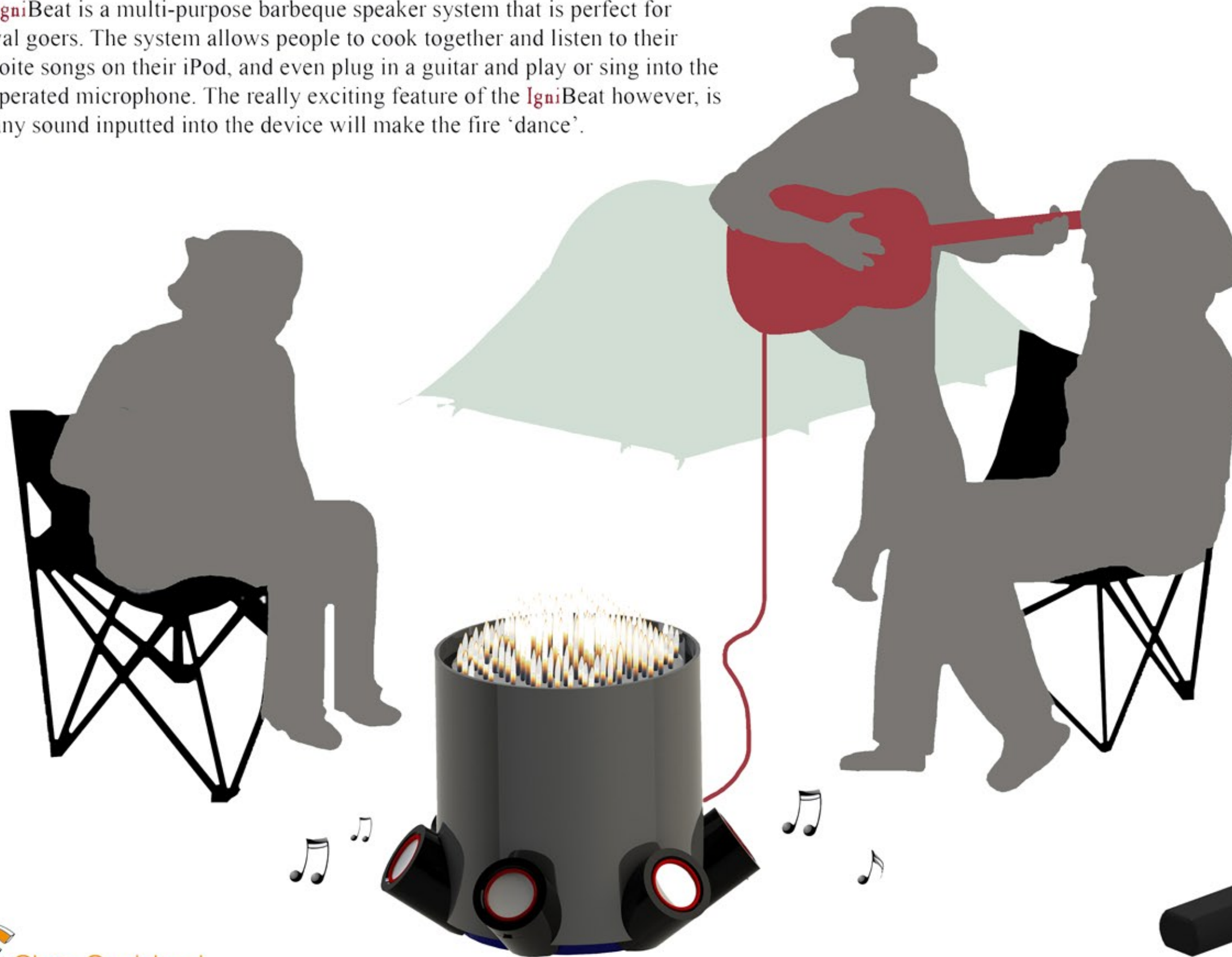
The 'Bike Trap' takes the principal of a standard tubular steel bike rack, but with an innovative twist. When viewed from the side, bicycles appear to be caught in the steel work.



IgniBeat

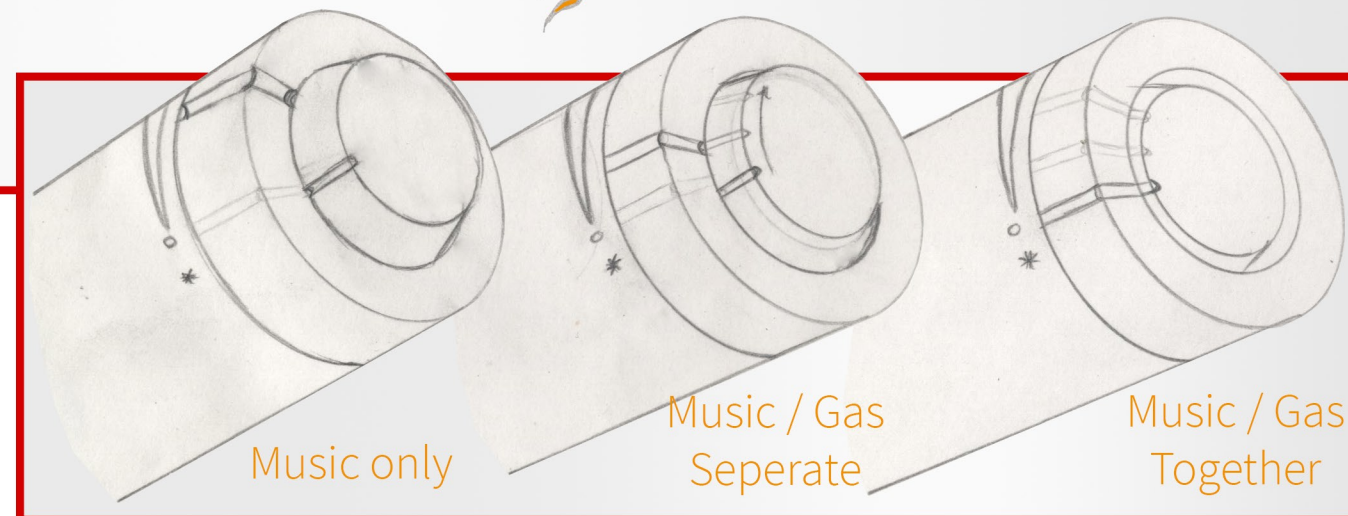
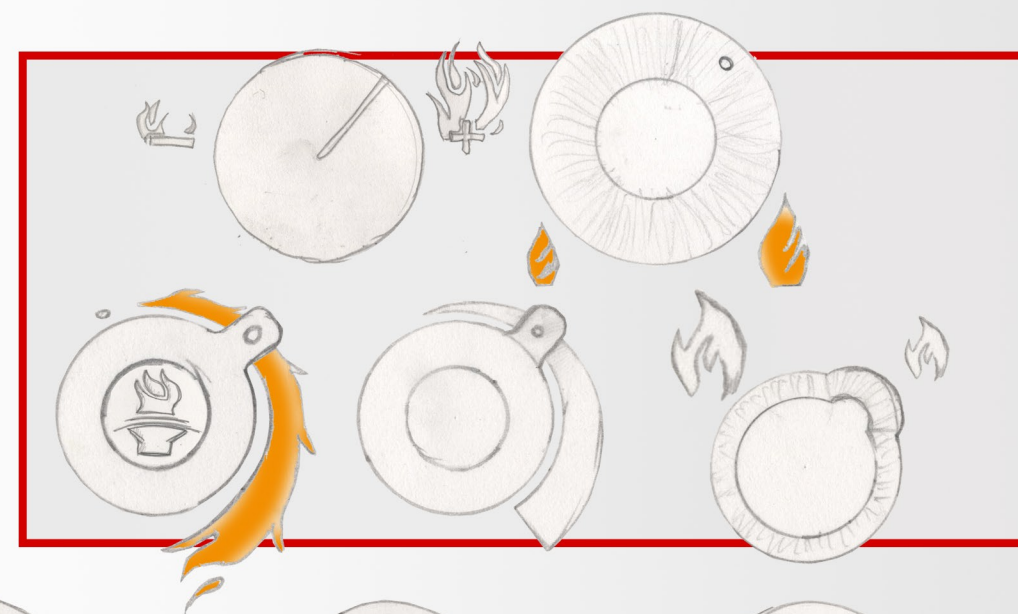
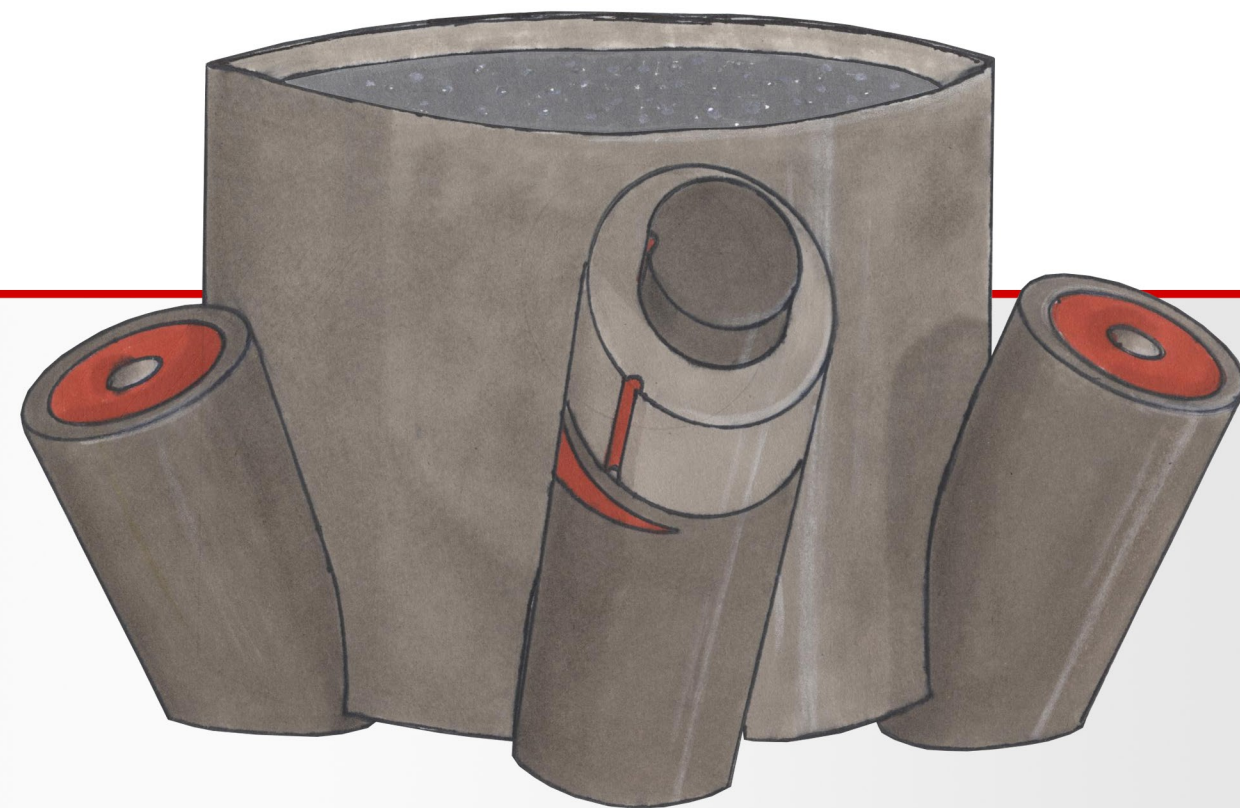
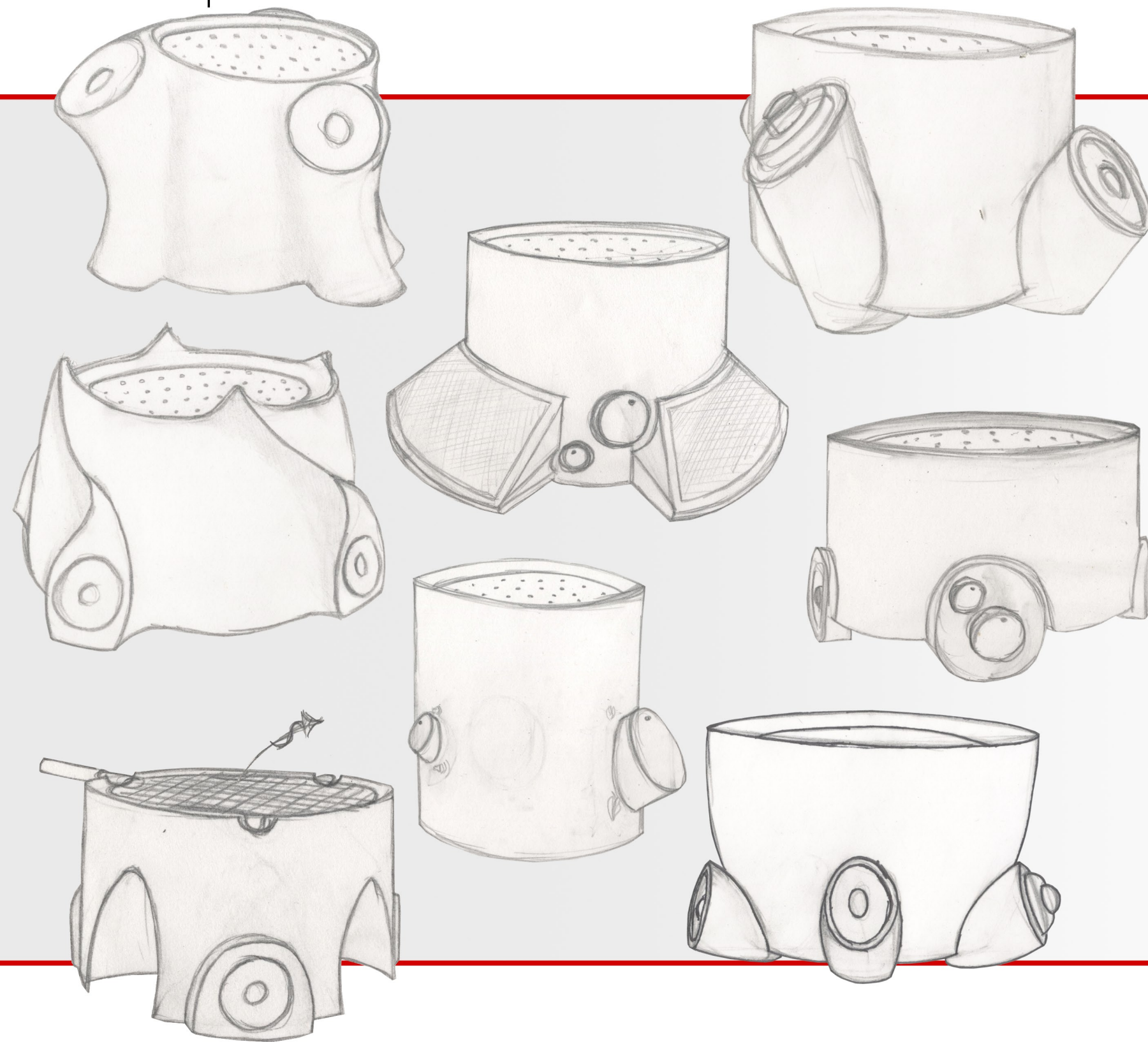
Turn up the volume, **Turn up the heat.**

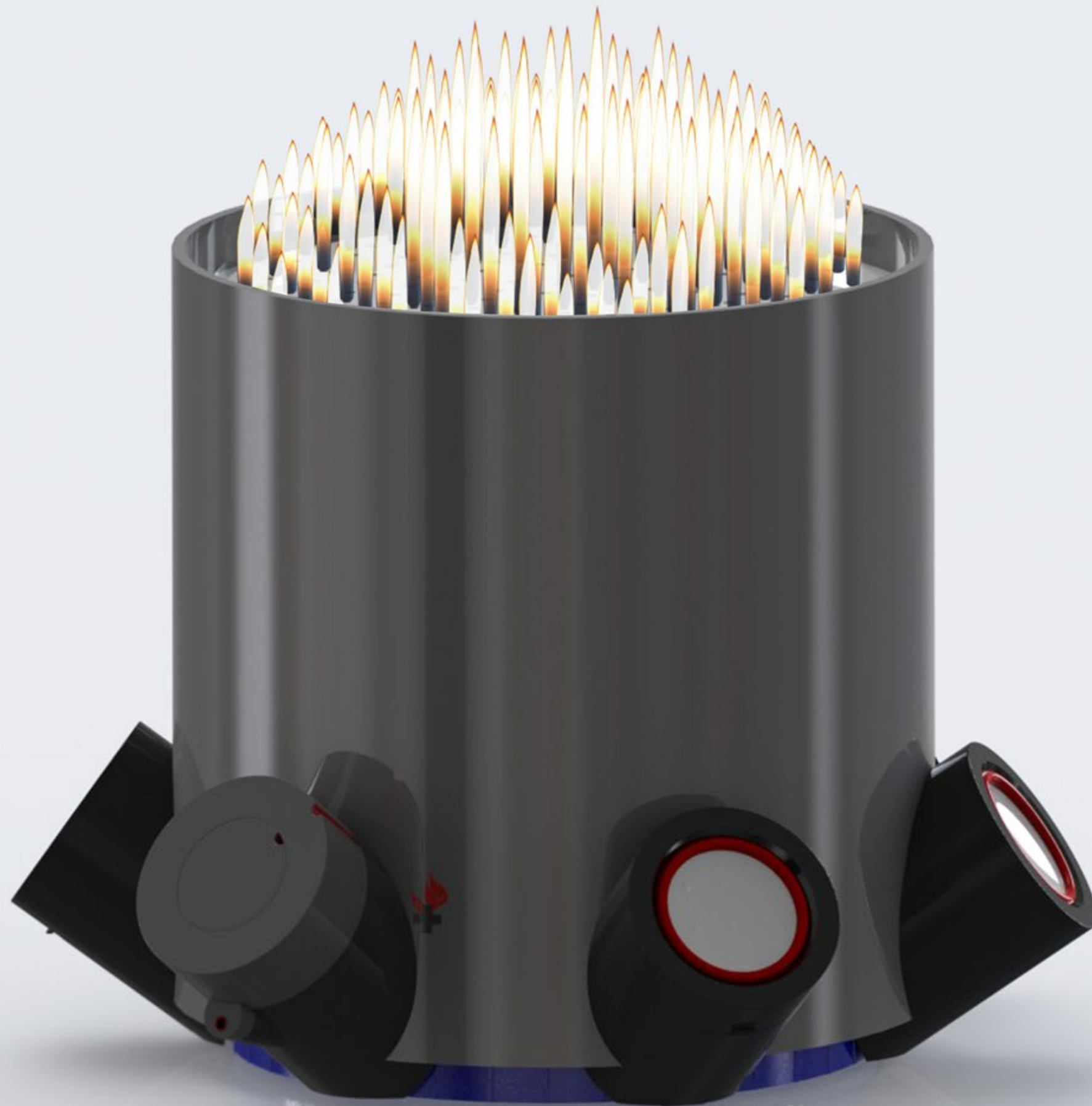
The **IgniBeat** is a multi-purpose barbeque speaker system that is perfect for festival goers. The system allows people to cook together and listen to their faveorite songs on their iPod, and even plug in a guitar and play or sing into the incorporated microphone. The really exciting feature of the **IgniBeat** however, is that any sound inputted into the device will make the fire 'dance'.



IgniBeat ♣

Concept Sketches

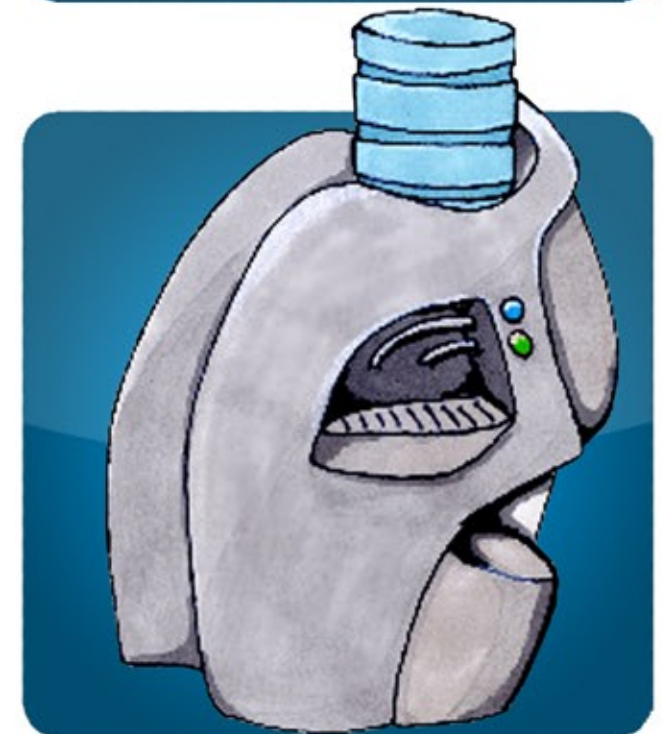




Easy Load

Water Cooler





A water cooler and dispenser designed to be easy to refill. The curved shape and grooves guide the bottle into the receptor.

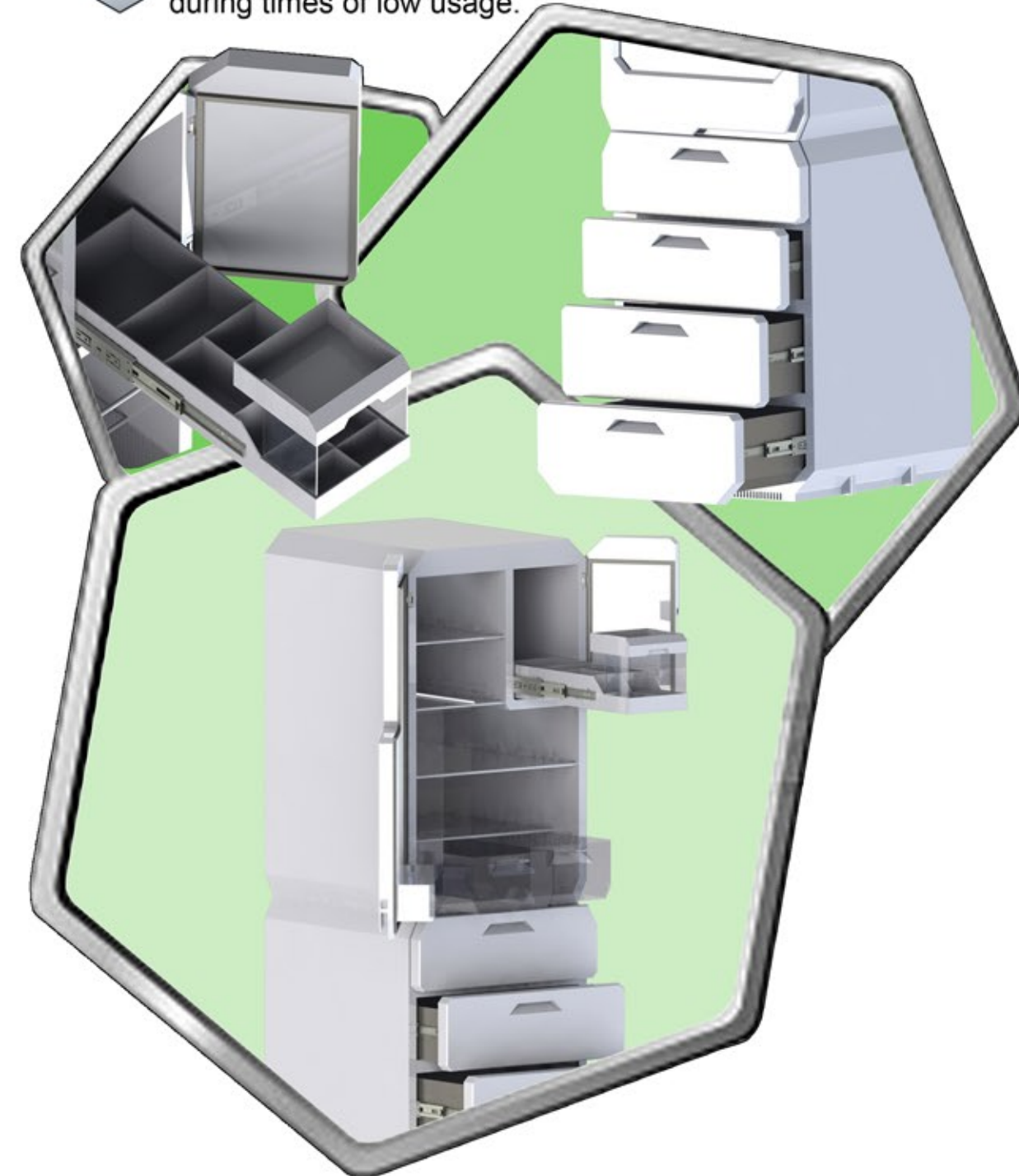




HEXECO

ENVIRONMENTALLY FRIENDLY FRIDGE

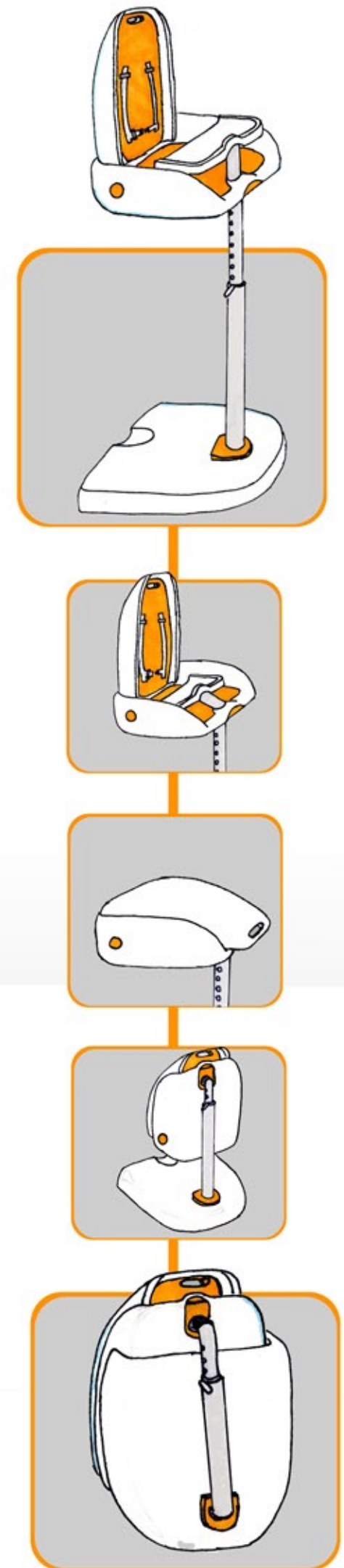
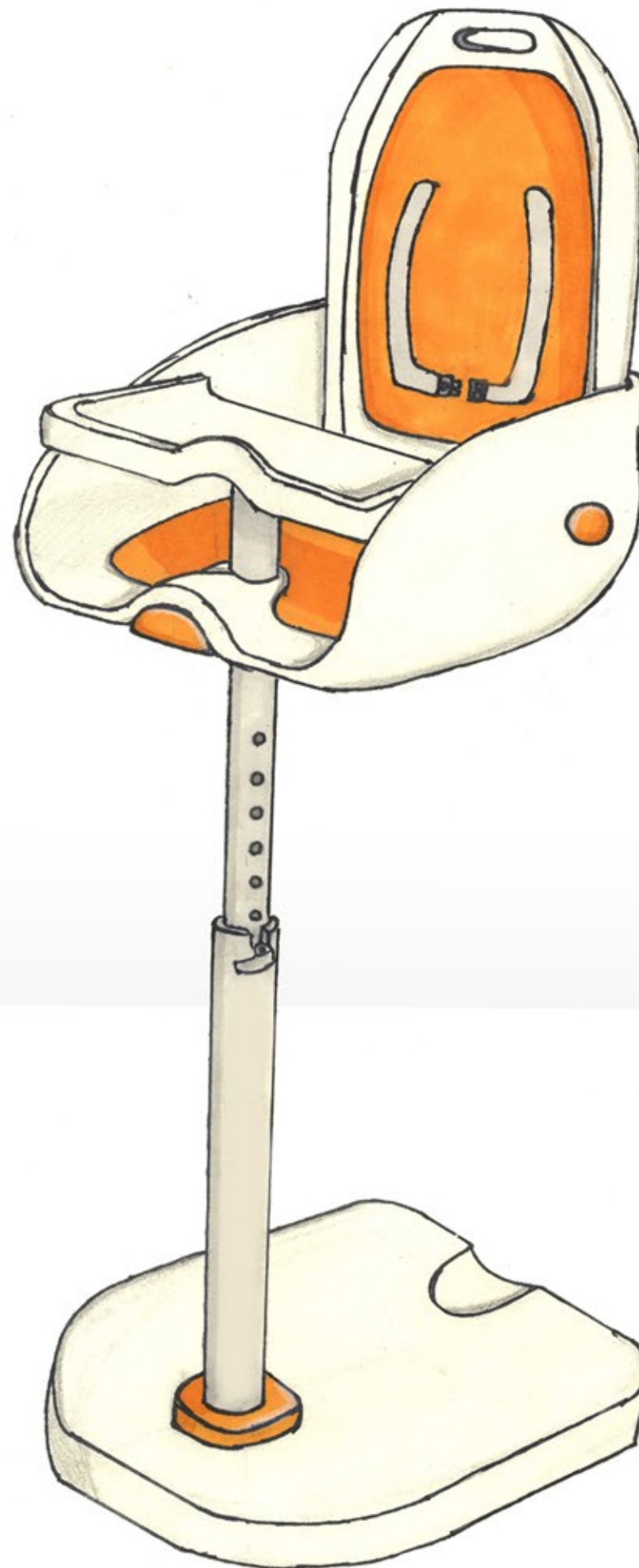
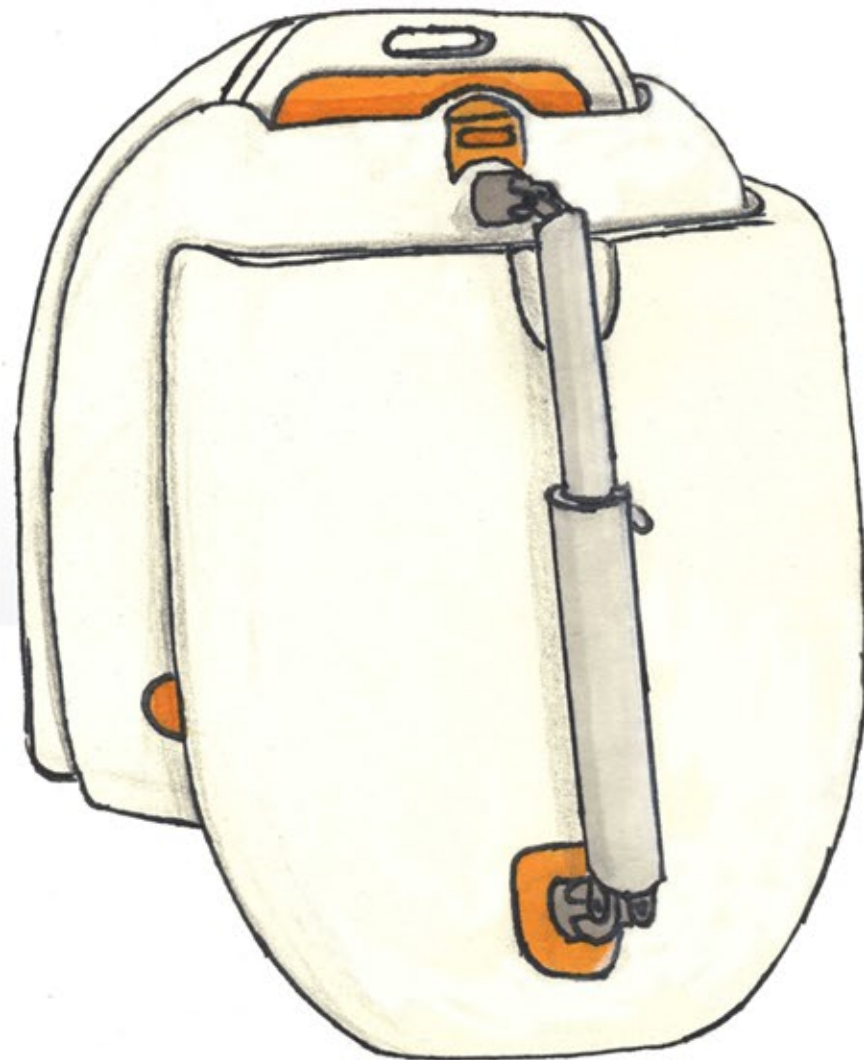
-  An energy efficient fridge/freezer with innovative storage solutions, to work with the users lifestyle.
-  Made from bio-plastics and recycled materials, and uses an environmentally friendly refrigerant.
-  Switchable glass with a touch of the handle, to change the opacity of the front of the fridge.
-  Efficient low power setting, to decrease power usage during times of low usage.



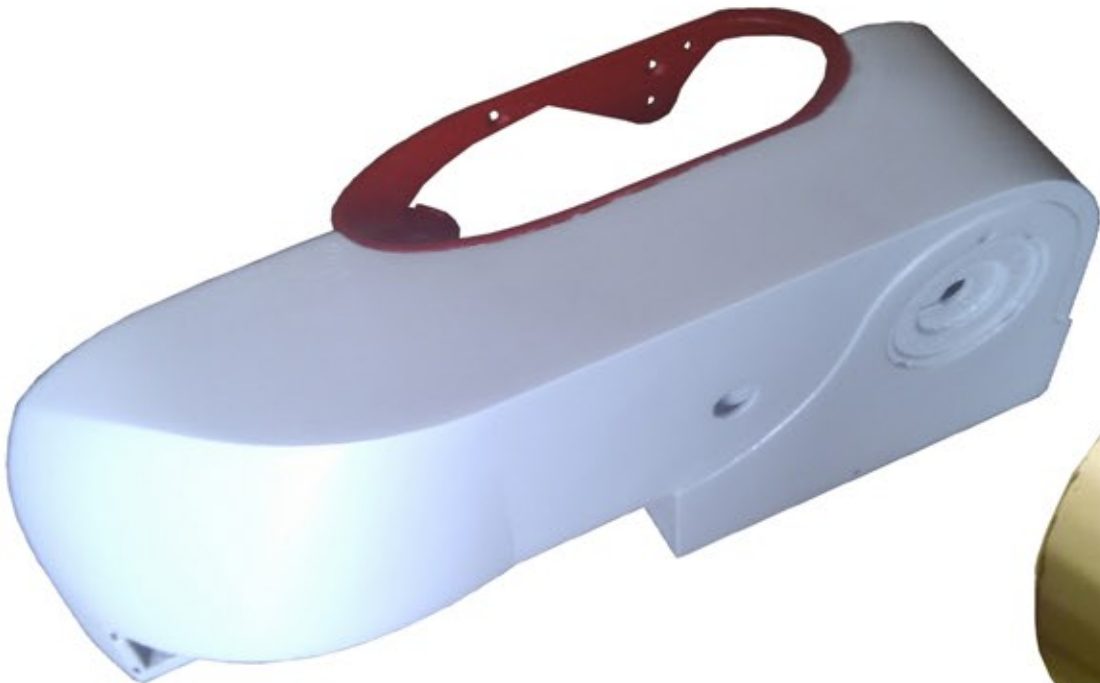
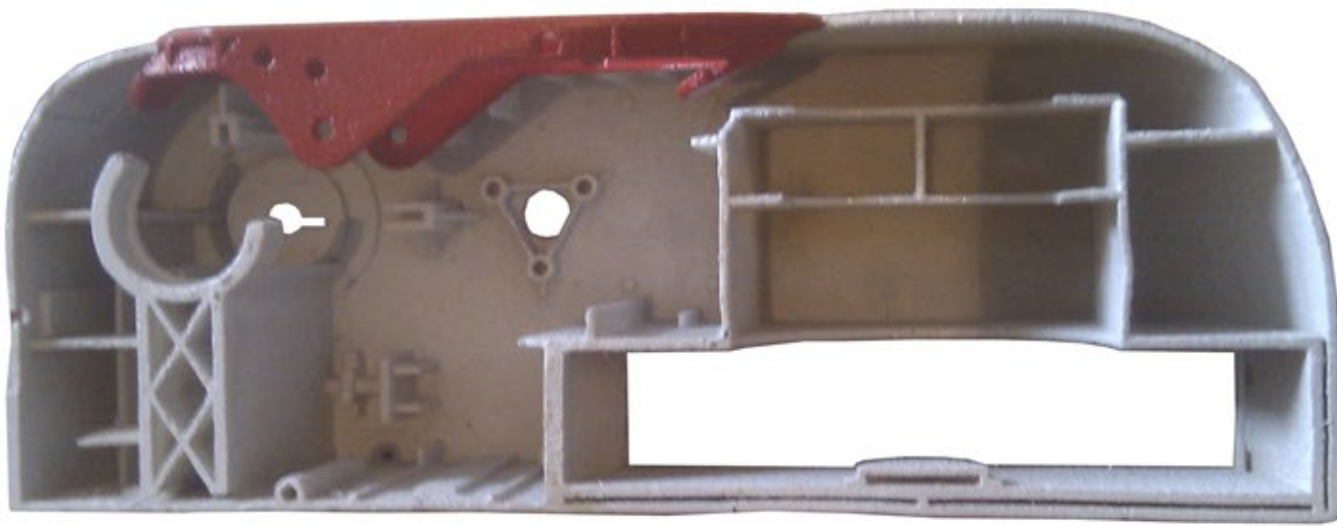
Pebble

Highchair

A live project for 'Baba Bing' to design a folding highchair.



Physical model work



Sketch Work

